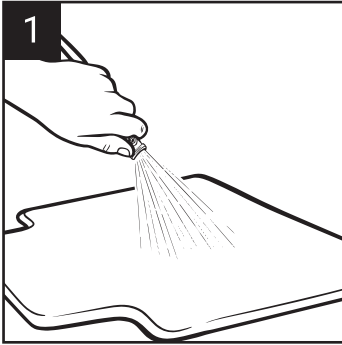


LVP+ CARPET SUBSTRATES

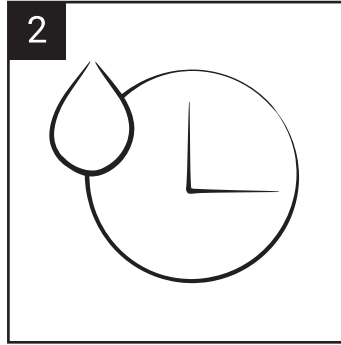


Watch Video

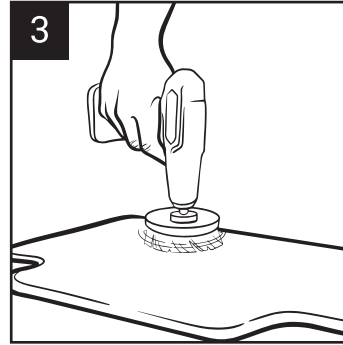
Application Instructions



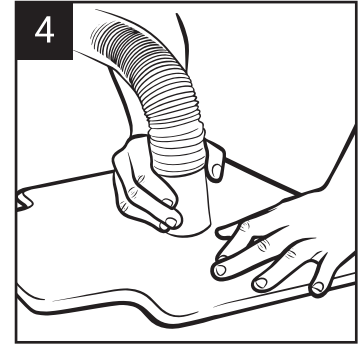
1
Clean with an upholstery cleaner/shampoo.



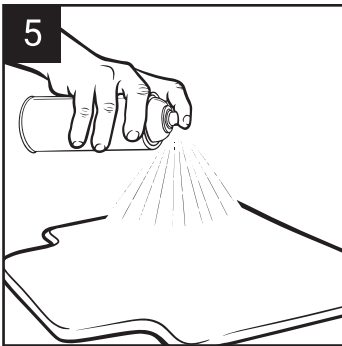
2
Allow to dry completely.



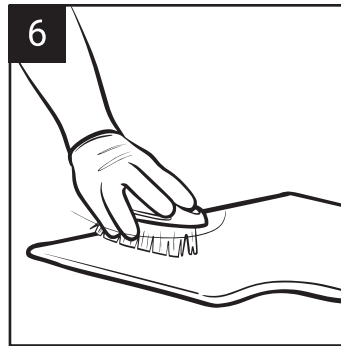
3
Brush the carpet with a nylon bristle brush.



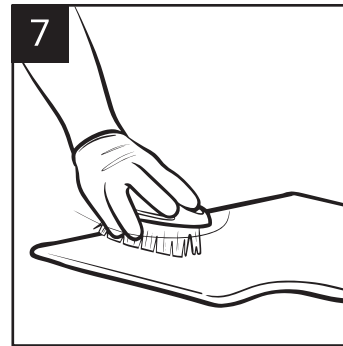
4
Vacuum thoroughly.



5
Apply desired Colorbond topcoat.



6
Brush carpet after application of each coat immediately to soften the carpet fibers and then allow to dry.



7
After each coat has dried, brush the carpet again.



It is not recommended to change the color of velour or carpet drastically. It is only recommended to re-refresh a color. **DO NOT** use the same carpet brush for different colors, as this can change the color appearance.